



The Panel Room provides a cosy setting for an intimate dinner or small meeting with the warm, mahogany panelled walls and original fireplace creating the feel of a Gentleman's Club.

Conveniently located next to the larger Sutherland Room, The Panel Room can be connected as a stunning area for pre-dinner drinks or as a syndicate room for meetings.

## HIGHLIGHTS

- Contemporary design with original fireplaces
- Can be hired semi-privately, privately or linked with The Sutherland Room
- Selection of meeting and private dining packages
- Bespoke menus from The Game Bird

## KEY FACTS

Dimensions: 5.15m x 4.43m / 16.9 x 14.5ft

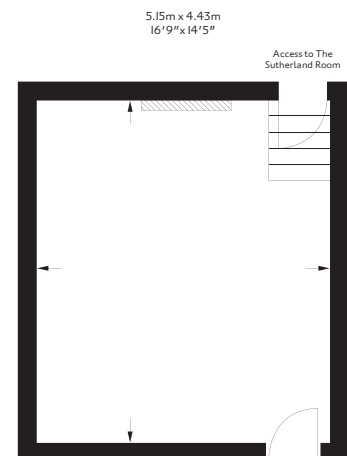
Total Area: 24m<sup>2</sup> / 258 ft<sup>2</sup>

Ceiling height: 2.68m

Adjoining Room: The Sutherland Room

Location: Ground floor

LAYOUT	CAPACITY
Oval Table	-
Round Table	8
U-Shape	-
Boardroom	8
Theatre	8
Cabaret	6
Classroom	-
Standing	14



[thestaffordlondon.com](http://thestaffordlondon.com)

[@StaffordLondon](https://twitter.com/StaffordLondon) [f TheStaffordLondon](https://facebook.com/TheStaffordLondon) [@ thestaffordlondon](https://instagram.com/thestaffordlondon)  
16-18 St James's Place London SW1A 1NJ United Kingdom  
T +44 (0)20 7518 1104 E [meetingsandevents@thestaffordlondon.com](mailto:meetingsandevents@thestaffordlondon.com)