



THE  
STAFFORD  
LONDON  
EST 1912

## Meetings & Events

*Menus & E-Brochure*

[thestaffordlondon.com](http://thestaffordlondon.com)

[@StaffordLondon](https://twitter.com/StaffordLondon) [Instagram](https://www.instagram.com/staffordlondon) [thestaffordlondon](https://www.facebook.com/staffordlondon)

16-18 St James's Place London SW1A 1NJ United Kingdom

T +44 (0)20 7518 1104 E [meetingsandevents@thestaffordlondon.com](mailto:meetingsandevents@thestaffordlondon.com)

LEGEND™

*Preferred*  
HOTELS & RESORTS



THE  
STAFFORD  
LONDON  
EST 1912

## Meetings & Events

### *Our Spaces*

The Stafford London is the perfect location for any event, offering some of the most luxurious meeting rooms in the capital. Each of our seven private dining locations provide a unique setting, while our discreet staff will ensure your event is seamless from start to finish.

From an important business meeting, to an informal lunch or dinner with friends or a cocktail reception in the 380-year-old working wine cellars, the team are on hand to create bespoke events that are flawless every time.





## THE WINE CELLARS

The Stafford London's vaulted wine cellars are a perfect backdrop for a unique event.

Exclusive wine tasting events offer an enlightening experience for wine lovers, and are available for up to groups of 40. Our knowledgeable Sommeliers are on hand to take you on a journey through the magnificent 380-year-old Wine Cellars, and create the ultimate evening of wine tasting, or enjoy a wine pairing dinner to make your event truly memorable.

For a truly special occasion, the Wine Cellars can be hired for private dining groups of up to 44, with the atmospheric candlelit surroundings proving particularly popular for intimate wedding parties or family celebrations.

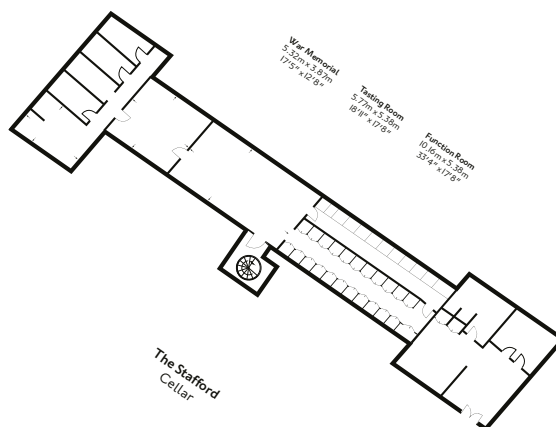
### HIGHLIGHTS

- A hidden WWII museum with original memorabilia
- Selection of meeting, private dining and wine tasting packages with our Sommelier

### KEY FACTS

Dimensions: 10m x 5.3m / 32.9 x 17.3ft  
 Total Area: 61 m<sup>2</sup> / 657 ft<sup>2</sup>  
 Ceiling height: 2.3m  
 Location: Basement

LAYOUT	CAPACITY
Oval Table	32
Round Table	24 (3x8)
E-Shape	44
Boardroom	32
Theatre	40
Cabaret	18 (3x6)
Classroom	24
Standing	85



# THE WINE CELLARS ALTERNATIVE LAYOUT OPTIONS



Tasting chamber - ideal for wine tastings and drinks



Standing reception - up to 85 guests



E-shape layout - up to 44 guests

[thestaffordlondon.com](http://thestaffordlondon.com)

[@StaffordLondon](https://twitter.com/StaffordLondon) [f TheStaffordLondon](https://www.facebook.com/StaffordLondon) [the StaffordLondon](https://www.instagram.com/staffordlondon)

16-18 St James's Place London SW1A 1NJ United Kingdom

T +44 (0)20 7518 1104 E [meetingsandevents@thestaffordlondon.com](mailto:meetingsandevents@thestaffordlondon.com)

LEGEND<sup>SM</sup>  
*Preferred*  
HOTELS & RESORTS

# THE WINE CELLARS ALTERNATIVE LAYOUT OPTIONS



Tasting chamber - ideal for wine tastings and drinks



Standing reception - up to 85 guests



E-shape layout - up to 44 guests

[thestaffordlondon.com](http://thestaffordlondon.com)

[@StaffordLondon](https://twitter.com/StaffordLondon) [f TheStaffordLondon](https://www.facebook.com/StaffordLondon) [the StaffordLondon](https://www.instagram.com/staffordlondon)

16-18 St James's Place London SW1A 1NJ United Kingdom

T +44 (0)20 7518 1104 E [meetingsandevents@thestaffordlondon.com](mailto:meetingsandevents@thestaffordlondon.com)

LEGEND<sup>SM</sup>  
*Preferred*  
HOTELS & RESORTS



## THE SUTHERLAND ROOM

The versatile Sutherland Room always looks impressive, whether prepared for a high-level board meeting, set for a lavish breakfast or for an exclusive private dinner.

The Sutherland Room, conveniently located to the rear of The Game Bird, can be used semi-privately for a casual lunch or dinner or privately for a more formal evening or meeting. The Sutherland Room is combined with The Panel Room, which can be used for pre-dinner drinks or as a break-out room for meetings.

### HIGHLIGHTS

- Can be hired semi-privately or privately
- Linked with The Panel Room
- Selection of meeting and private dining packages
- Bespoke menus from The Game Bird

### KEY FACTS

Dimensions: 9.63m x 4.47m / 31.6 x 14.7ft

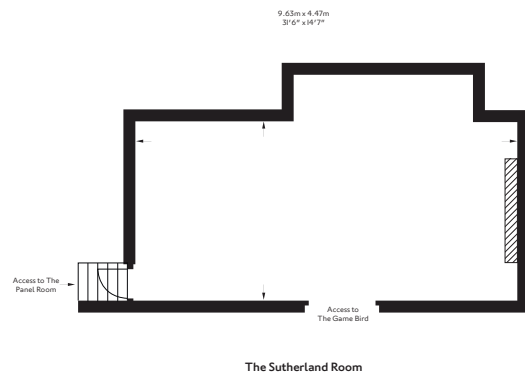
Total Area: 48 m<sup>2</sup> / 517 ft<sup>2</sup>

Ceiling height: 2.54m

Adjoining Room: The Panel Room / The Game Bird

Location: Ground floor

LAYOUT	CAPACITY
Oval Table	26
Round Table	24 (3X8)
U-Shape	22
Boardroom	26
Theatre	40
Cabaret	18 (3X6)
Classroom	24
Standing	40
E-Shape	29



# THE SUTHERLAND ROOM ALTERNATIVE LAYOUT OPTIONS



Theatre layout - up to 40 guests



Reception - up to 60 guests with  
The Panel room



Oval layout - up to 26 guests or  
24 guests with plasma screen



## THE PANEL ROOM

The Panel Room provides a cosy setting for an intimate dinner or small meeting with the warm, mahogany panelled walls and original fireplace.

Conveniently located next to the larger Sutherland Room, The Panel Room can be connected as a stunning area for pre-dinner drinks or as a syndicate room for meetings.

### HIGHLIGHTS

- Can be hired privately or linked with The Sutherland Room
- Selection of meeting and private dining packages
- Bespoke menus from The Game Bird

### KEY FACTS

Dimensions: 5.15m x 4.43m / 16.9 x 14.5ft

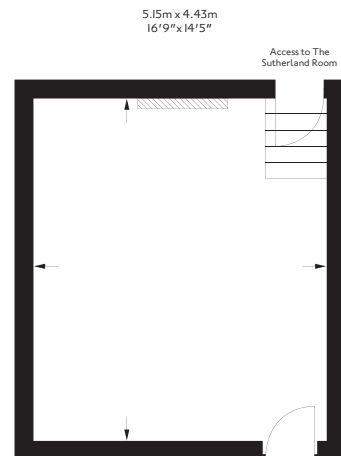
Total Area: 24m<sup>2</sup> / 258 ft<sup>2</sup>

Ceiling height: 2.68m

Adjoining Room: The Sutherland Room

Location: Ground floor

LAYOUT	CAPACITY
Oval Table	-
Round Table	8
U-Shape	-
Boardroom	8
Theatre	8
Cabaret	6
Classroom	-
Standing	14



[thestaffordlondon.com](http://thestaffordlondon.com)

[@StaffordLondon](https://twitter.com/StaffordLondon) [f TheStaffordLondon](https://www.facebook.com/TheStaffordLondon) [i thestaffordlondon](https://www.instagram.com/thestaffordlondon)

16-18 St James's Place London SW1A 1NJ United Kingdom

T +44 (0)20 7518 1104 E [meetingsandevents@thestaffordlondon.com](mailto:meetingsandevents@thestaffordlondon.com)

LEGEND

*Preferred*  
HOTELS & RESORTS





## THE PINK ROOM

The Pink Room, with its period style and abundance of natural light, is the perfect space for a small meeting or event.

Interconnecting to the larger Argyll Room, the two venues provide the perfect combination for a reception followed by a private lunch or dinner, or a break out room during business meetings.

### HIGHLIGHTS

- Can be hired privately or linked with The Argyll Room
- Selection of meeting and private dining packages
- Bespoke menus from The Game Bird
- Natural daylight

### KEY FACTS

Dimensions: 6.26m x 3.81m / 20.5 x 12.4ft

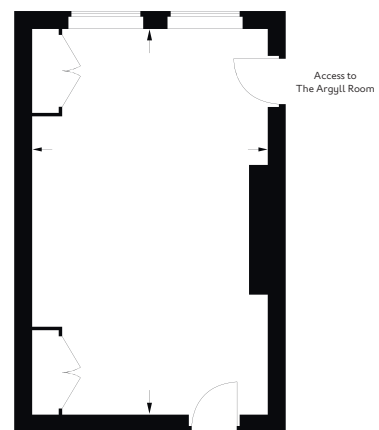
Total Area: 23m<sup>2</sup> / 247 ft<sup>2</sup>

Ceiling height: 3.2m

Adjoining Room: The Argyll Room

Location: Ground floor

LAYOUT	CAPACITY
Oval Table	10
Round Table	8
U-Shape	-
Boardroom	8
Theatre	10
Cabaret	6
Classroom	8
Standing	14



[thestaffordlondon.com](http://thestaffordlondon.com)

[@StaffordLondon](https://twitter.com/StaffordLondon)
[f TheStaffordLondon](https://www.facebook.com/TheStaffordLondon)
[i thestaffordlondon](https://www.instagram.com/thestaffordlondon)

16-18 St James's Place London SW1A 1NJ United Kingdom

T +44 (0)20 7518 1104 E [meetingsandevents@thestaffordlondon.com](mailto:meetingsandevents@thestaffordlondon.com)

LEGEND™

*Preferred*  
HOTELS & RESORTS



## THE ARGYLL ROOM

Flooded with natural daylight the elegant Argyll Room retains original features such as panelled walls and marble fireplace and is the ideal venue for formal presentations and board meetings or a celebration with family and friends.

Conveniently located next to the smaller Pink Room, The Argyll Room can be connected as a stunning area for pre-dinner drinks or as a syndicate room for meetings.

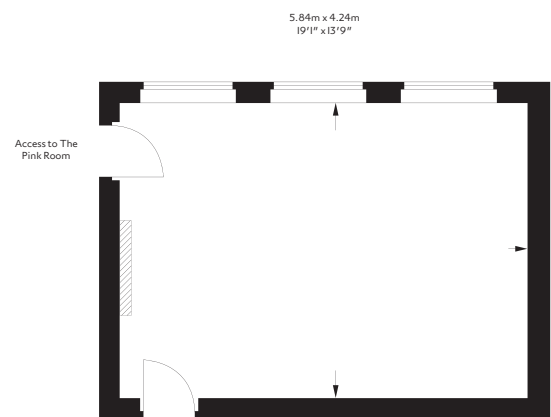
### HIGHLIGHTS

- Can be hired privately or linked with The Pink Room
- Selection of meeting and private dining packages
- Bespoke menus from The Game Bird
- Natural daylight

### KEY FACTS

Dimensions: 5.84m x 4.24m / 19.1 x 14ft  
 Total Area: 24m<sup>2</sup> / 269ft<sup>2</sup>  
 Ceiling height: 2.4m  
 Adjoining Room: The Pink Room  
 Location: Ground floor

LAYOUT	CAPACITY
Oval Table	14
Round Table	10
U-Shape	-
Boardroom	12
Theatre	14
Cabaret	6
Classroom	12
Standing	18



[thestaffordlondon.com](http://thestaffordlondon.com)

[@StaffordLondon](https://twitter.com/StaffordLondon)
[f TheStaffordLondon](https://www.facebook.com/TheStaffordLondon)
[i thestaffordlondon](https://www.instagram.com/thestaffordlondon)

16-18 St James's Place London SW1A 1NJ United Kingdom

T +44 (0)20 7518 1104 E [meetingsandevents@thestaffordlondon.com](mailto:meetingsandevents@thestaffordlondon.com)

LEGEND  
*Preferred*  
 HOTELS & RESORTS



## THE GAME BIRD

The Game Bird is a contemporary tale about relaxed, informal dining any time of the day. A place to eat, drink and socialise. The focus is on modern British comfort cooking executed with style and panache, all wrapped in a seductive ambience that oozes cool sophistication.

We are offering exclusive use of The Game Bird Restaurant for a private lunch, dinner or evening drinks reception.

### HIGHLIGHTS

- Bespoke menus from The Game Bird
- Adjoining room: The Sutherland Room
- Natural daylight

LAYOUT	CAPACITY
Oval Table	-
Round Table	-
U-Shape	-
Boardroom	-
Theatre	-
Cabaret	-
Existing	55
Standing	80



[thestaffordlondon.com](http://thestaffordlondon.com)

[@StaffordLondon](https://twitter.com/StaffordLondon)
[f TheStaffordLondon](https://www.facebook.com/TheStaffordLondon)
[i thestaffordlondon](https://www.instagram.com/thestaffordlondon)

16-18 St James's Place London SW1A 1NJ United Kingdom

T +44 (0)20 7518 1104 E [meetingsandevents@thestaffordlondon.com](mailto:meetingsandevents@thestaffordlondon.com)

**LEGEND**  
*Preferred*  
 HOTELS & RESORTS



## THE STAFFORD PARK SUITE

A large open plan sitting room and dining room features a stunning central Calcutta marble fireplace, which is flanked by double glass doors that lead out onto the spectacular private terrace, where guests can enjoy magical rooftop views.

Both the sitting room and outdoor terrace are hired as one private dining space and can be adapted for a lunch, dinner, drinks reception or business meeting.

### HIGHLIGHTS

- Newly renovated, contemporary design
- Sitting room and terrace can be hired privately together with terrace, or as a suite with bedroom
- Selection of meeting and private dining packages
- Bespoke menus from The Game Bird
- Natural daylight
- Outdoor terrace with views of London
- Outdoor heaters and coverings available

### KEY FACTS

Dimensions: 3.96m x 4.15m (living area) 2.97m x 0.96m (stage area) 4.32m x 4.15m (outdoor terrace)

Total Area: 66.7m<sup>2</sup> / 718ft<sup>2</sup>

Ceiling height: 2.68m

Location: Main House Hotel, 5th Floor

LAYOUT	CAPACITY
Oval Table	10
Round Table	-
U-Shape	-
Boardroom	-
Theatre	-
Cabaret	-
Classroom	-
Standing	30

[thestaffordlondon.com](http://thestaffordlondon.com)

[@StaffordLondon](https://twitter.com/StaffordLondon) [f TheStaffordLondon](https://www.facebook.com/TheStaffordLondon) [i thestaffordlondon](https://www.instagram.com/thestaffordlondon)

16-18 St James's Place London SW1A 1NJ United Kingdom

T +44 (0)20 7518 1104 E [meetingsandevents@thestaffordlondon.com](mailto:meetingsandevents@thestaffordlondon.com)

LEGEND  
Preferred  
HOTELS & RESORTS



## THE COURTYARD

The Courtyard is the perfect place for all fresco events and celebrations. The Stafford London offer semi-private events in this stunning location. Whether it be a lavish drinks reception, or a sumptuous barbecue, our unique courtyard is the ideal location to enjoy exquisite food and drinks in the London sunshine.

When booking The Courtyard you will also have access to The Wine Cellars, which can be accessed via the stairs located in The Courtyard.

### HIGHLIGHTS

- Can be hired semi-privately
- Selection of meeting and private dining packages, including a barbecue menu
- Bespoke menus from The Game Bird
- Heaters and awning available
- Private bar available

### KEY FACTS

Dimensions: 20m x 13.25m / 65.61ft x 43.47ft

Location: The American Bar at The Stafford London, Blue Ball Yard

LAYOUT	CAPACITY
Oval Table	-
Rounds	30
U-Shape	-
Boardroom	-
Theatre	-
Cabaret	-
Classroom	-
Standing	50

[thestaffordlondon.com](http://thestaffordlondon.com)

[@StaffordLondon](https://twitter.com/StaffordLondon)
[f TheStaffordLondon](https://www.facebook.com/TheStaffordLondon)
[i thestaffordlondon](https://www.instagram.com/thestaffordlondon)

16-18 St James's Place London SW1A 1NJ United Kingdom

T +44 (0)20 7518 1104 E [meetingsandevents@thestaffordlondon.com](mailto:meetingsandevents@thestaffordlondon.com)

LEGEND  
*Preferred*  
 HOTELS & RESORTS



THE  
STAFFORD  
LONDON  
EST 1912

## Meetings & Events

### *Menus*

We offer a selection of menus to suit any event. From a business lunch, to an indulgent private dining celebration, our menus showcase the best The Stafford London has to offer.

Choose from our lunch selection, canape menu, or our specially-curated private dining menus, including The Discovery menu, Taste of The Game Bird, and finally our Gourmet menu.

# THE GAME BIRD

## CANAPÉS

Selection of 4 - £22.50pp

Selection of 6 - £33.75pp

### Fish

DEVON CRAB TART  
Oscietra Caviar

H FORMAN & SON SMOKED SALMON  
SLIDERS

CRISPY TIGER PRAWNS  
Singapore Chilli Sauce

### Meat

ROAST BEEF KOFTA  
Mint Yogurt, Pine Nuts

BUTTERMILK FRIED CHICKEN  
Mustard Crème Fraîche

GAME SAUSAGE ROLL  
Smoked Mayonnaise

### Vegetarian

GOLDEN CROSS PARIS-BREST  
Basil Pesto

GARDEN PEA CROQUETTES  
Truffle Aioli

SALT-BAKED BEETROOT  
Toasted Pine Nuts, Whipped Ricotta

RED ONION & GOAT'S CHEESE TART

### Puddings

DARK CHOCOLATE CHOUX BUN  
Crème Diplômée

LEMON MERINGUE PIE

APPLE AND BLACKBERRY CRUMBLE

We are happy to provide information on food allergies and intolerances on request. As food allergens are present in the kitchen, there is a risk that traces of these may be found in our dishes. (v) vegetarian option (v\*) vegan option. All prices are inclusive of VAT.  
A discretionary service charge of 12.5% will be added to your bill. Menu available from 21st March until 22nd September.

# THE GAME BIRD

## Lunch Selection

*Please choose any 5 items for £55*

*Please choose any 8 items for £65*

### Sandwiches

THE AMERICAN BAR CLUB SANDWICH  
Grilled Chicken, Pancetta, Free-Range Egg,  
Vine Tomato, Baby Gem Lettuce

CHICKEN CAESAR WRAP

MONTGOMERY CHEDDAR CHEESE AND TRUFFLE TOASTIE

PRAWN COCKTAIL WRAP

SMOKED SALMON BAGEL  
Cream Cheese

SUN-DRIED TOMATO, MOZZARELLA, PESTO PANINI

BARREL AGED FETA BRUSCHETTA  
Green Olive Tapenade

### Salads

WALDORF SALAD  
Endive, Celery, Walnuts,  
Apple, Mustard Mayonnaise

PANZANELLA SALAD  
New Season Tomatoes, Shallots, Sourdough Bread, Moscatel Vinegar

BUTTERMILK CHICKEN SALAD  
Green Leaves, Spring Onions, Ranch Dressing

MIXED GREEN SALAD

SUPERFOOD SALAD  
Quinoa, Broccoli, Sweet Potato, Feta,  
Pomegranate, Pesto

SALT BAKED BEETROOT SALAD  
Pine Nuts, Goat's Curd

### Puddings

VANILLA CRÈME BRÛLÉE

LEMON MERINGUE PIE

FRUIT PLATTER

CHOCOLATE & CARAMEL TART

We are happy to provide information on food allergies and intolerances on request. As food allergens are present in the kitchen, there is a risk that traces of these may be found in our dishes. (v) vegetarian option (v\*) vegan option. All prices are inclusive of VAT. A discretionary service charge of 12.5% will be added to your bill.



THE  
GAME BIRD

# The Discovery

£95 per person

## Starters

SPRING CHICKEN TURNOVER  
Homemade Piccalilli

YELLOWFIN TUNA NIÇOISE

TOMATO CONSOMMÉ (v) or (v\*)  
Sun-dried Tomatoes, Basil

## Mains

CHAR-GRILLED PORK CHOP  
Café de Paris Butter, Hasselback Potatoes, Pickled Onions

AUBERGINE PARMIGIANA(v)  
Parmesan Cream

CONFIT COD  
Beer Batter Scraps, Pea Purée, Warm Tartare Sauce

## Puddings

STRAWBERRY ETON MESS (v)

BUTTERMILK AND TONKA BEAN PANNA COTTA  
Grapefruit Jelly

CHOCOLATE & HAZELNUT SWISS ROLL (v)  
Coffee Ice Cream

SELECTION OF THREE BRITISH CHEESES  
Quince Jelly, Homemade Chutney, Cheese Crackers  
PLATE £20.00/BOARD £65.00

We are happy to provide information on food allergies and intolerances on request. As food allergens are present in the kitchen, there is a risk that traces of these may be found in our dishes. (v) vegetarian option (v\*) vegan option.  
All prices are inclusive of VAT. A discretionary service charge of 12.5% will be added to your bill. Menu available from 21st March until 22nd September.

THE  
GAME BIRD

Taste of The Game Bird  
£110 per person

Starters

SLOW-POACHED SALMON  
Citrus Crème Fraîche, Compressed Cucumber

GARDEN PEA VELOUTÉ (v) or (v\*)  
Truffle & Cheese Choux

Mains

STUFFED LOIN OF LAMB  
Potato Terrine, Broccoli Purée

FRESH HERB DUMPLINGS (v)  
New Season Vegetables, Gremolata

Pudding

PISTACHIO CHEESECAKE (v)  
Raspberry Compote

GARDEN FRUIT COBBLER (v)  
Vanilla Ice Cream

SELECTION OF THREE BRITISH CHEESES  
Quince Jelly, Homemade Chutney, Cheese Crackers  
PLATE £20.00/BOARD £65.00

We are happy to provide information on food allergies and intolerances on request. As food allergens are present in the kitchen, there is a risk that traces of these may be found in our dishes. (v) vegetarian option (v\*) vegan option.  
All prices are inclusive of VAT. A discretionary service charge of 12.5% will be added to your bill. Menu available from 21st March until 22nd September.

THE  
GAME BIRD

# The Gourmet Menu

£140 per person

## Starters

DEVON CRAB TART  
Exmoor Caviar

BRITISH BURRATA (v)  
Watercress Pesto, Candied Orange Zest, Radish

## Mains

GRASS-FED BEEF WELLINGTON  
Smoked Cabbage, Carrot Purée, Red Wine Sauce

LEEK & TRUFFLE AGNOLOTTI (v)  
Pecorino Sauce

## Pudding

AFTER EIGHT (v)  
Aerated Mint Chocolate

STRAWBERRY & CHAMPAGNE CHOUX (v)  
White Chocolate Ganache

SELECTION OF THREE BRITISH CHEESES  
Quince Jelly, Homemade Chutney, Cheese Crackers  
PLATE £20.00/BOARD £65.00

We are happy to provide information on food allergies and intolerances on request. As food allergens are present in the kitchen, there is a risk that traces of these may be found in our dishes. (v) vegetarian option (v\*) vegan option.  
All prices are inclusive of VAT. A discretionary service charge of 12.5% will be added to your bill. Menu available from 21st March until 22nd September.